

# Getting Started

## 一、 Brief introduction

- Support USB 2.0port, speed up to 480Mbit/s
- Four channel 2.4G wireless receiver
- Four channel manual and auto switching.
- Support MPEG-4 format recording
- Support snapshot, timing snapshot and showing time.
- Support motion snapshot and motion alarming.
- Support one channel audio and video input and output.

## 二、Parameters

- 1、Receiving Frequency: channel 1: 2.414GHZ channel 2: 2.432GHZ  
channel 3: 2.450GHZ channel 4: 2.468GHZ
- 2、Video output: 75Ω/1Vp-p
- 3、Audio output: 10KΩ/200mVp-p
- 4、Validity pixel: 176×144, 320×240 , 352×288 , 720×576,1440×1152
- 5、Data port: USB2.0
- 6、Power consumption: <2W
- 7、fitting temperature: -20°C to +60°C
- 8、working temperature : 0°C to +40°C
- 9、weigh : 460g

### 三、Computer requirement

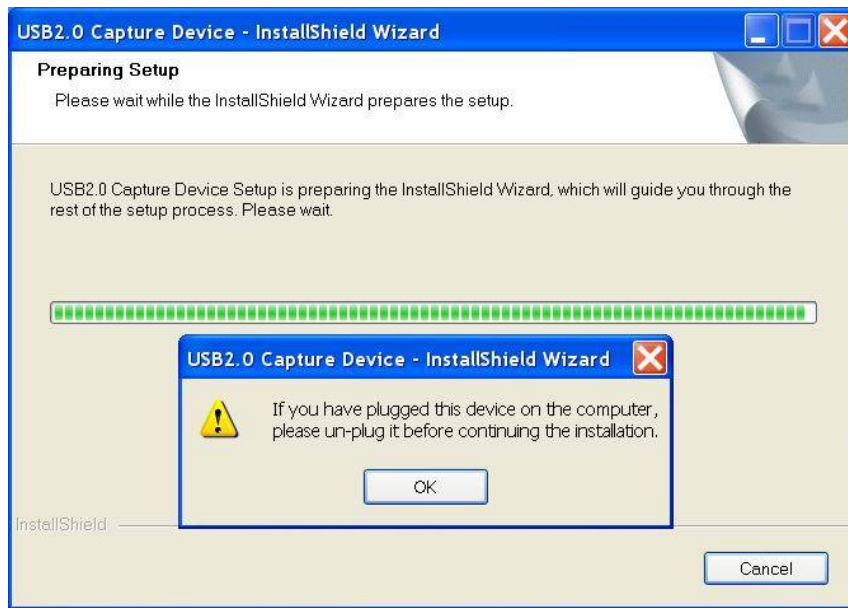
- CPU: 1.8GHZ or up
- RAM: 256 M or up
- Hard disk 10GB up
- Operation system: win2000,winXP
- USB2.0 port

#### 四、Accessories:

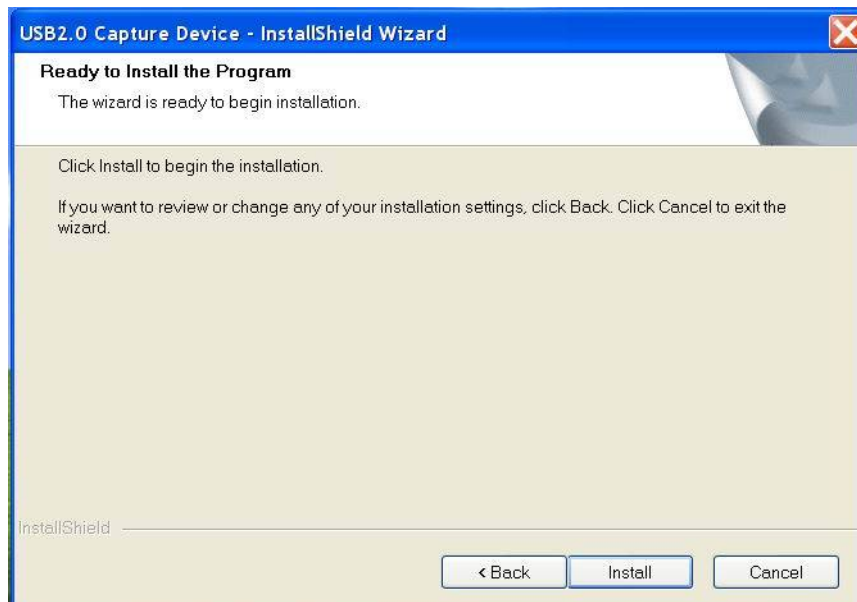
Antenna	1 pc
AV cable	1 pc
DC+5V/500mA power adapter	1 pc
USB cable	1 pc
User manual	1 pc
Remote control (R705-UWS only)	1 pc

# Manual of STK1160 driver installation

find the file STK1160 Driver in the disk, open it, click "Setup" start driving installation.



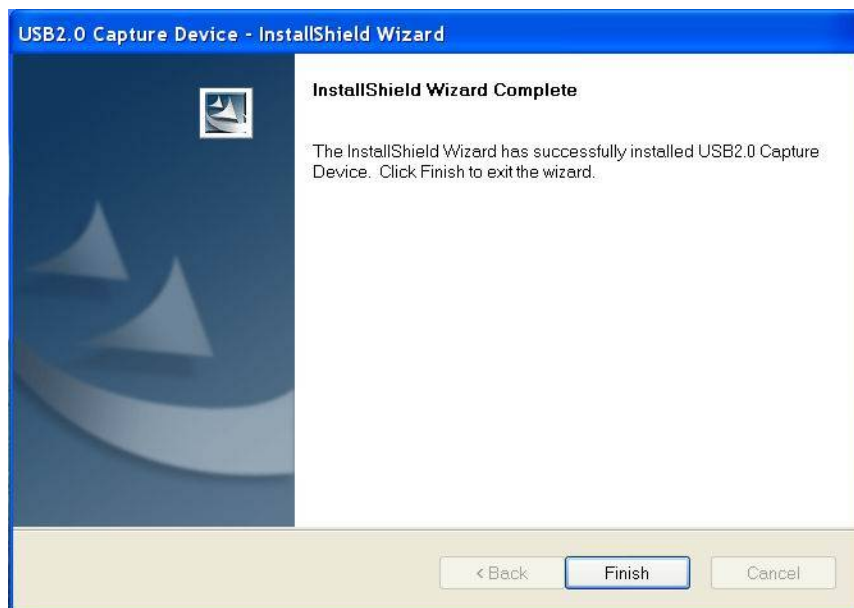
if this product is connecting with your computer, disconnect it please. Click "OK" to continue.



Click "Install"



Click "Continue Anyway" to next.



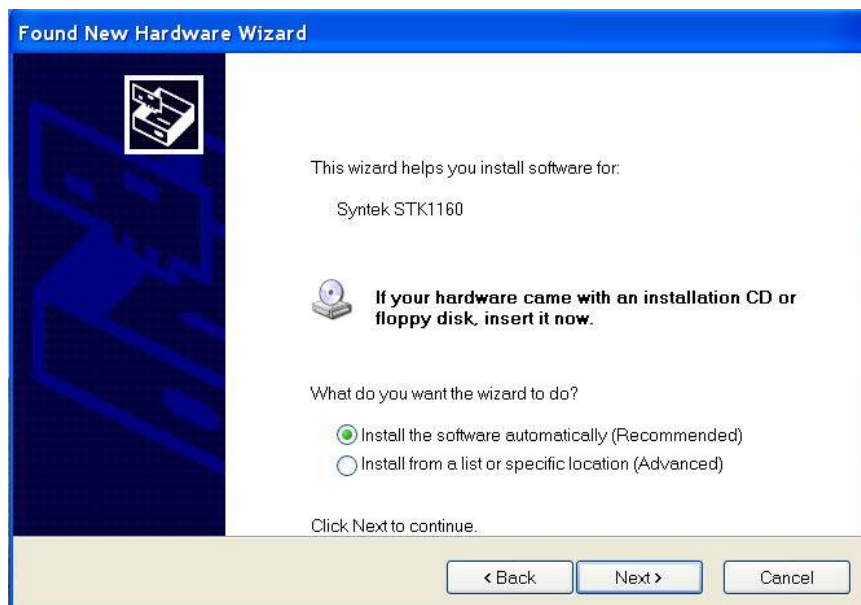
After click "Finish", there is a picture diction, click "OK", connect the product with computer to continue installing.



After connected, there is a dialogue, select “NO, not this time”, click “NEXT”



Click “NEXT”



Click “Continue Anyway” go to next step



Click “Finish”, after there is a reminder” hardware has been installed and can be used”, then go to monitor.

# Manual Of Mornitoring Software installation

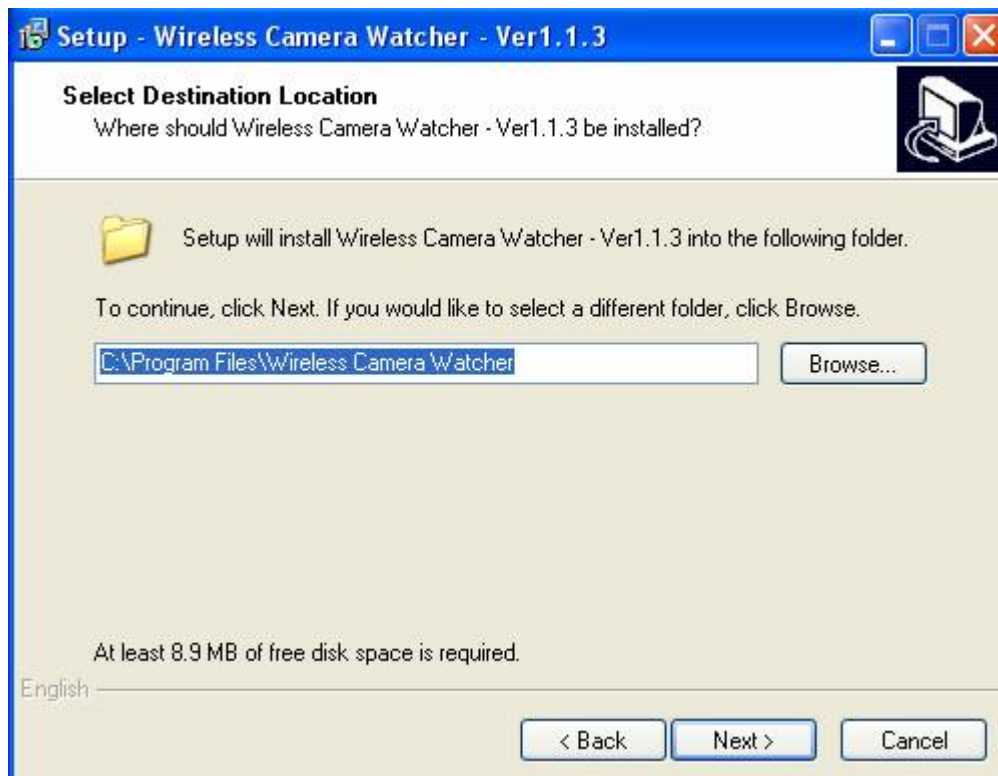
Find “702\_Setup” file, and open it ,click the file “SETUP EXE”, flip the following picture



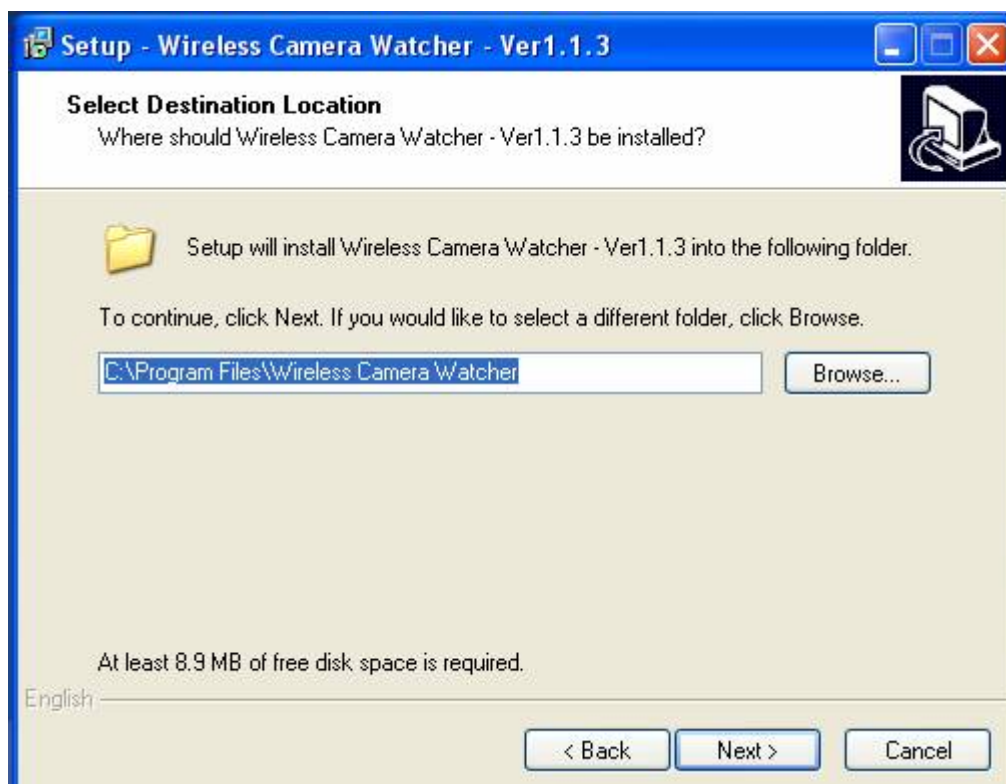
Select relative language and click “OK”



Click ”NEXT” to continue

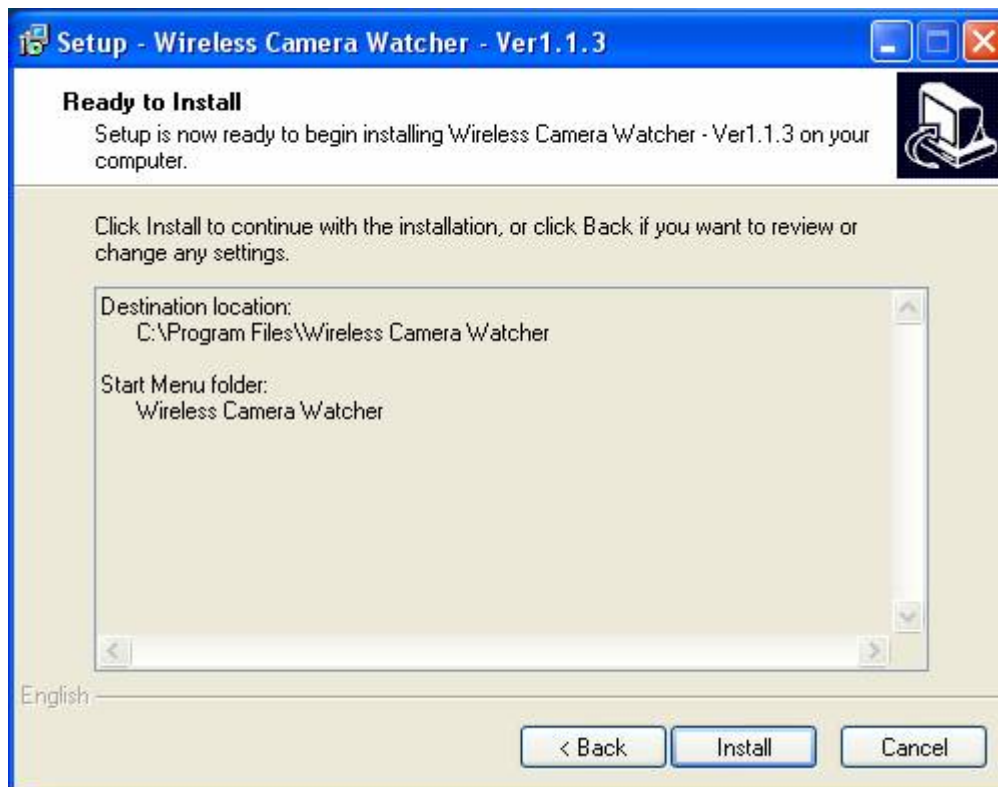


Select relative destination location, Click "next" to continue





Click “INSTALL”



Select "Read User Guide", After click "FINISH", finish software installation, then it will open automatically operation manual, read it carefully please.

