
USER MANUAL FOR USB 4CH DVR (MODEL NO.: 602)



Dear Valuable Client,

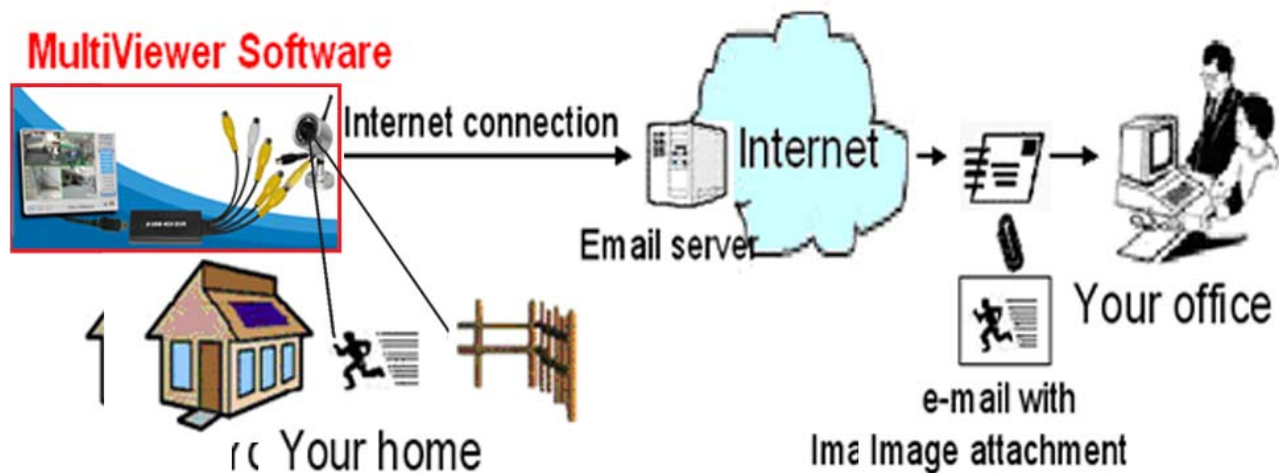
Thanks for your kind choice of our USB 4CH DVR, please read this manual carefully before using 602, which will provide you with a good guidance.

602 is a 4-channel wired video surveillance device for Personal Computer (PC). It can capture images at 30 frames per second and transmit images via USB to PC video browser, displaying excellent operating interface and wonderful visual shock. 602 has super audio/video management function (including timing snapshots and audio/video recording), safe manually-control channels, high-quality audio/video effect and

various alarm functions. Snapshot images in format JPG, recorded files in format AVI, both of which can be played via Windows Media Player and Real Player. Alarm runs as of motion detection and video loss, output by sound or e-mail.



Features



1. Alarm e-mails can be with image attached.
2. Save images on Hard Disk.
3. Sound Detection
4. Filtering function of video signal, for finding out active or invalid channels.
5. Alarm when signal lost.
6. Motion Detection.
7. Adjustable Sensitivity
8. Automatic Screen Lock
9. Timing Snapshot.
10. Record video/audio (with USB2.0 audio interface), snapshot available
11. Automatic Space Management: Stop recording and snapshot automatically once disk full.
12. 4 channels' video input on one computer

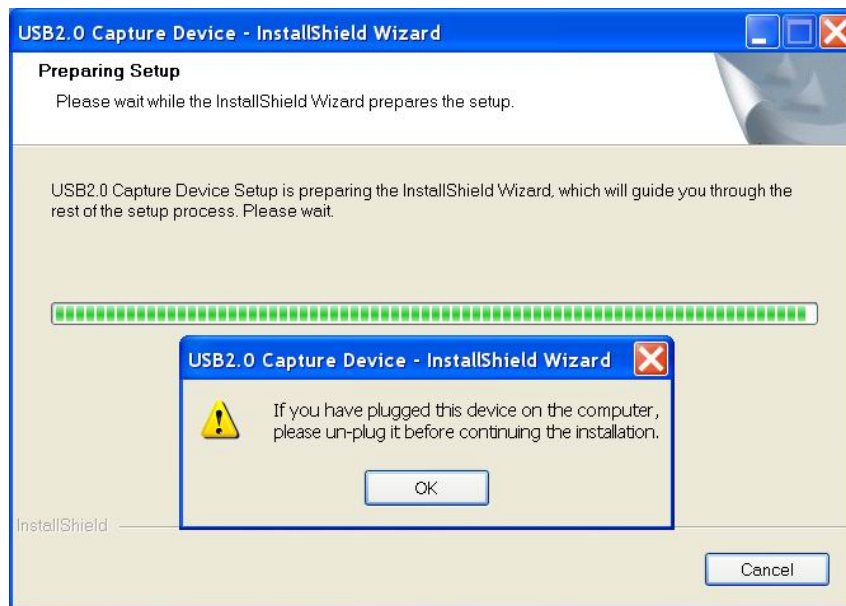
-
13. Screen Display: display date, time or channel description on video screen.
 14. Manually open/close invalid channel, or add/delete channel description.
 15. To login and logout by user name and password.
 16. Background Running Function.

System Requirements

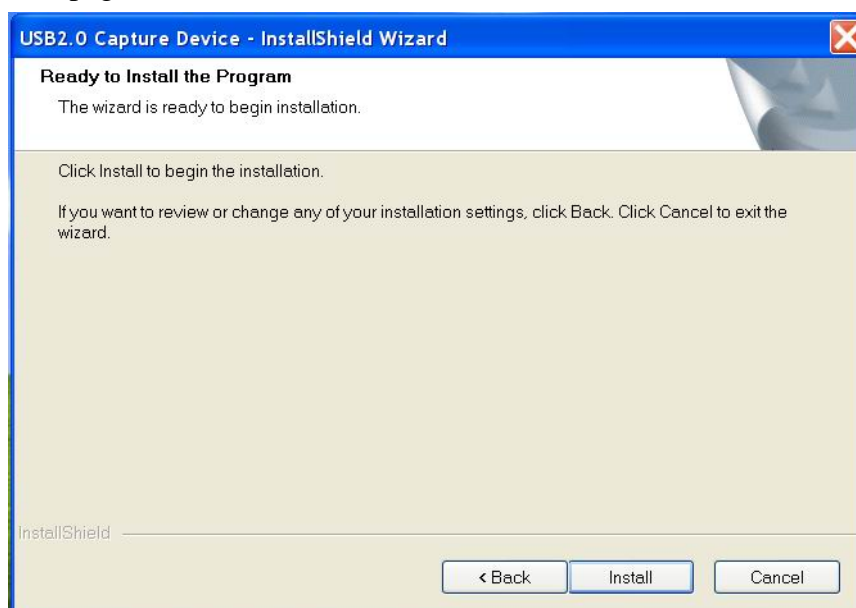
Windows 2000/XP or better
1.7GHz CPU or better
128M memory or above
Microsoft DirectX 9.0C
USB2.0 Interface
Audio Card / True Colors VGA Card

602 DRIVER INSTALLATION

Please find folder “602 Driver” and open it, click “**Driver**” to install,



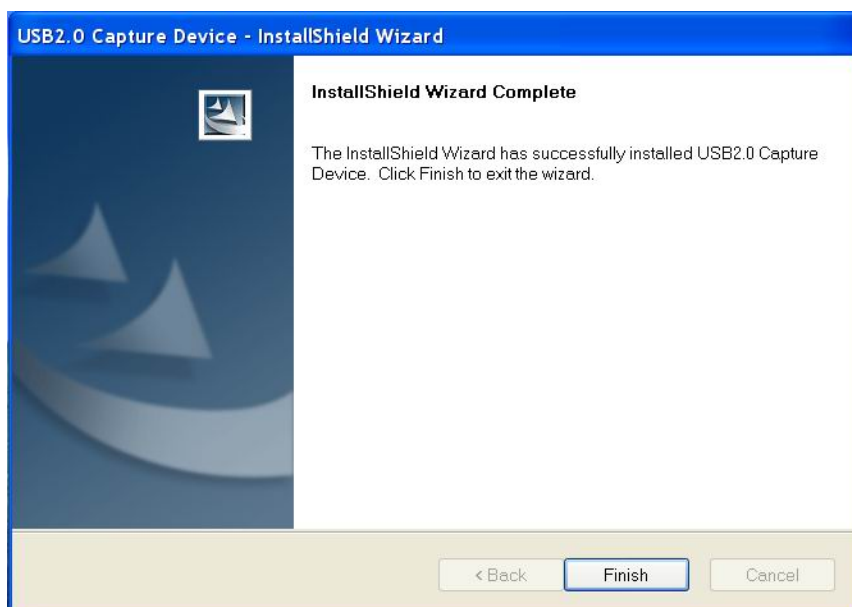
If your product has already been connected with PC, please disconnect it, then click “**OK**” for entering operation page:



Click: “**Install**”



Click “Continue Anyway” for next step:



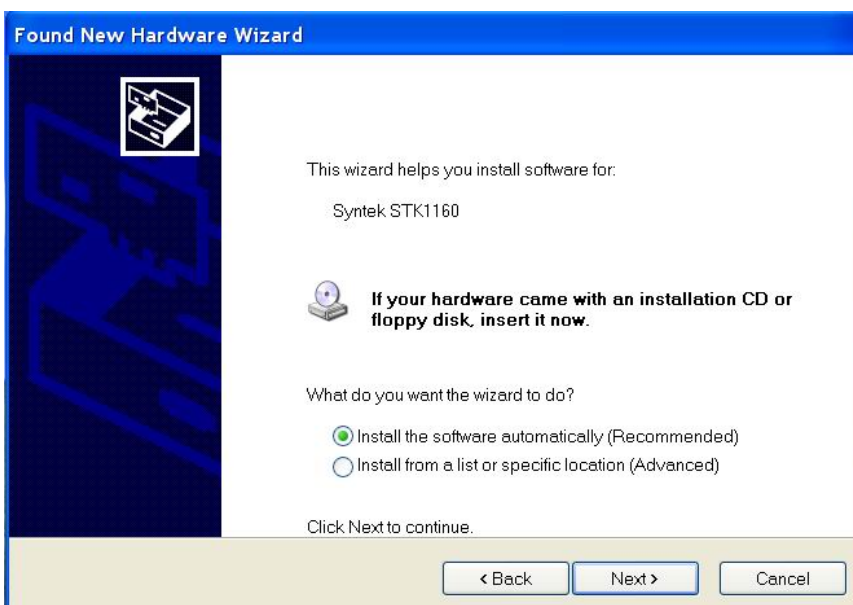
Click “Finish” , after below dialogue displayed, click “OK”, then connect product with computer for next step.



When below dialogue displayed, please choose “NO, not this time” , and click “NEXT”;

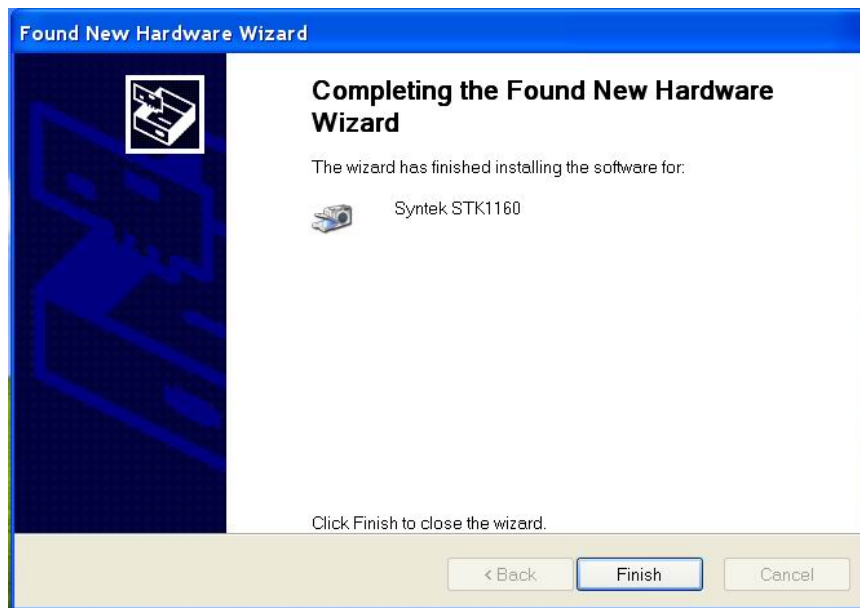


Click “NEXT”:



Click “Continue Anyway” for next step:

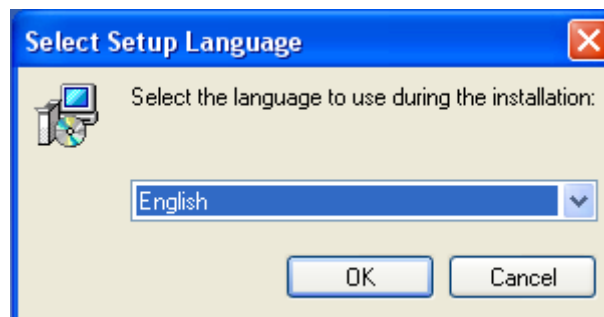




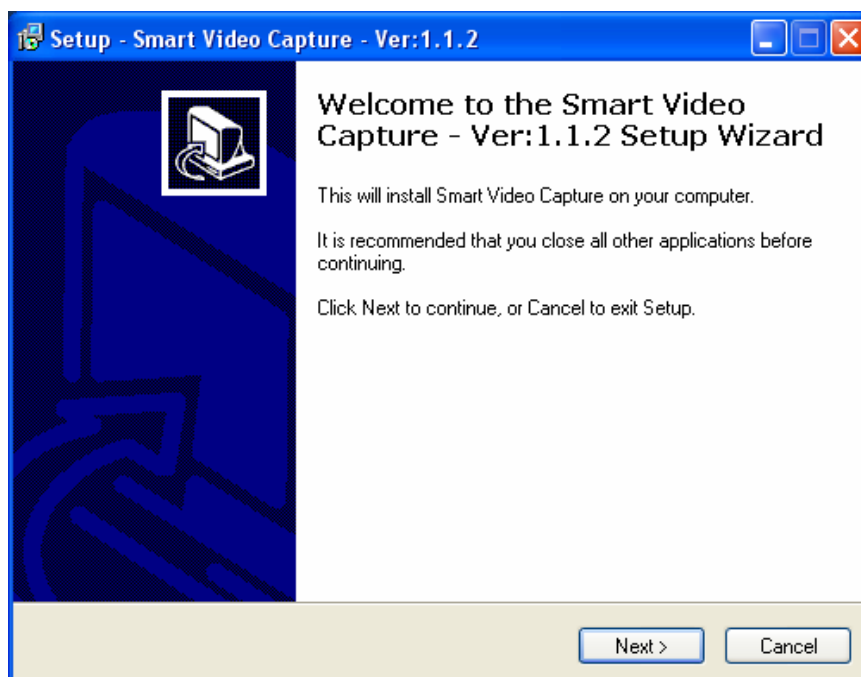
Click “**Finish**”, PC will give automatic notice “ new hardware installation finished” , then install control panel software.

602 CONTROL PANEL SOFTWARE INSALLARION

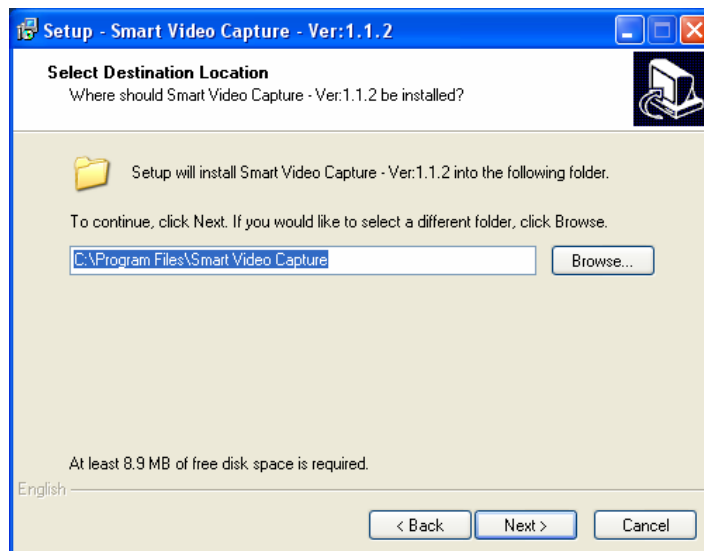
Please find folder “602 Application” , open it and double click “**SETUP**”, as below:



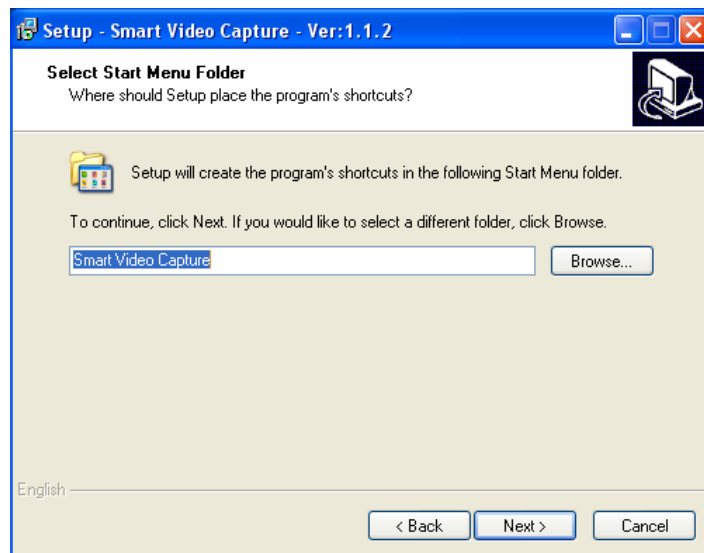
Choose language and click “**OK**”;



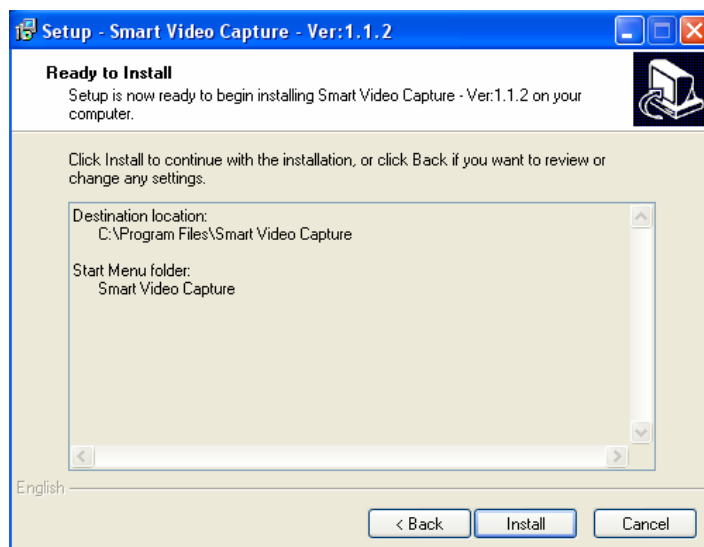
Click “**NEXT**” for next step:



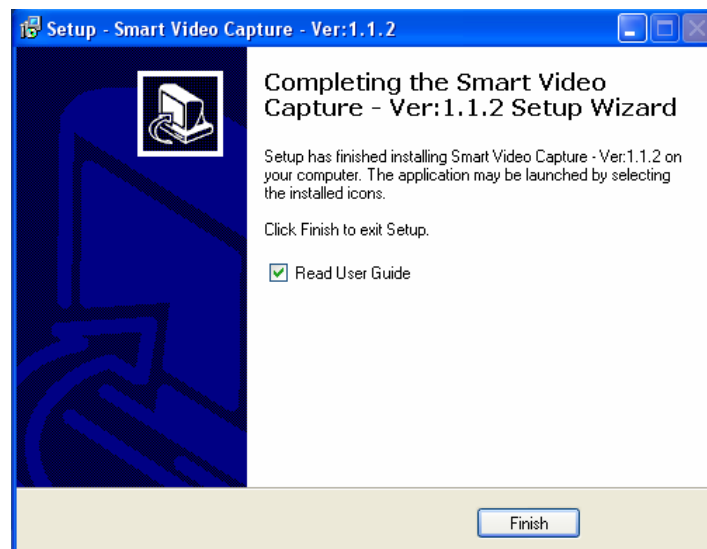
Choose suitable folder for filing and click **“NEXT”**;



Click **“INSTALL”**;



Click **“FINISH”**, icon “USB DVR MultiViewer” will display on the desktop



USER GUIDE FOR MULTIVIEWER APPLICATION

The MultiViewer Application can be started by clicking the MultiViewer icon on desktop or by using the Start menu. The following window will appear:

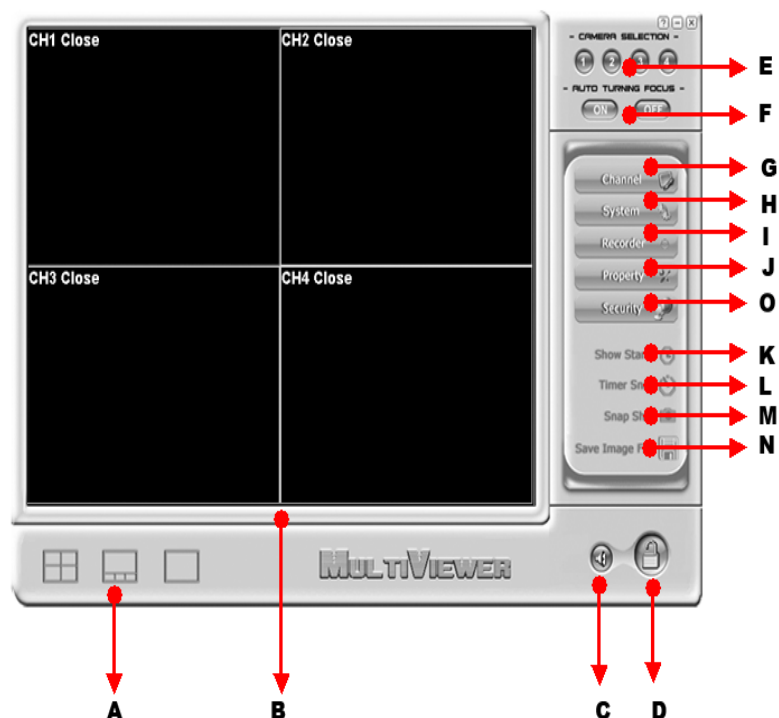


Figure 1

- A. Viewer Mode - Four images(2 kinds of display) or single image
- B. Viewer Window - Display video image
- C. Audio Play –Turn on/off audio (PC with USB2.0 audio interface)
- D. Login & Logout - Login and Logout MultiViewer by Username and Password.
- E. Camera Selection - Click the button to select channel.
- F. Auto Turning Focus - Click **“ON”** button to enable channel auto cycle, and click **“OFF”** button to disable channel auto cycle (Please note, **“Automatic”** option should be clicked in G in advance, see above Figure 1) .

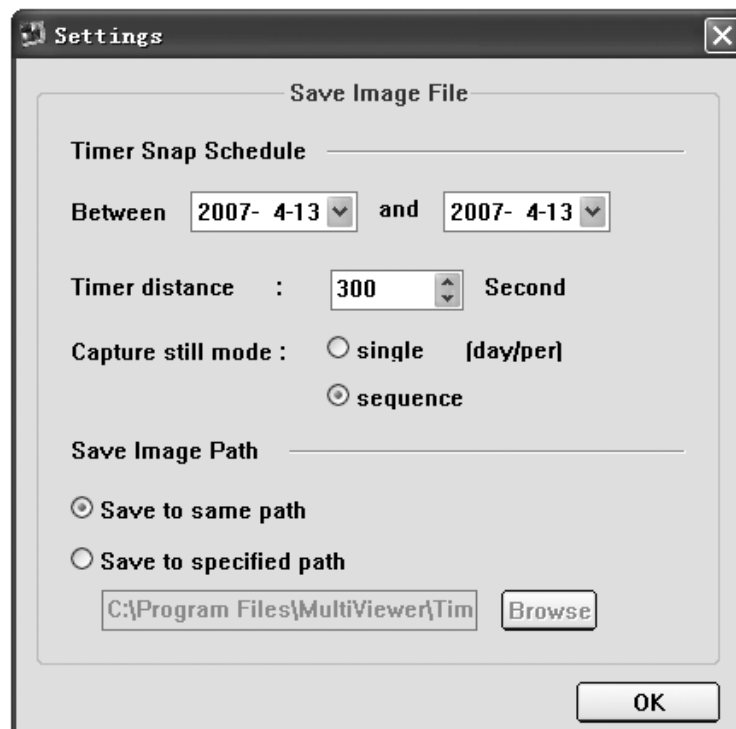
-
- G. Channel –Set up auto cycle channel , descriptions, etc.
 - H. System – Set up AVI file (format, path), user name and password, etc.
 - I. Recorder -Start or close video record
 - J. Property – Set up video effect
 - K. Show Stamp – Show information on channel screen, such as date display, time display, channel no. display, etc.,
 - L. Timer Snap – Timing snapshot .Time schedule of snapshot adjustable by clicking “**Save Image File**” button
 - M. Snap Shot -Capture and save image.
 - N. Save Image File – Set up the time schedule of snapshot and the saving path of image.
 - O. Security – Set up alarm output, including E-Mail Sever Setup, Motion Detection Setup, Signal Lost Setup, Sensitivity Setup, and Auto Logout Setup.

Save Image File

Click “**Save Image File**” button, below window will appear (ref. N in Figure1).

1. Timer Snap Schedule: Set up the time schedule of snapshot
2. Timber distance : Time slot
3. Capture Still mode: you can choose single picture by clicking “**single**” and choose quad by clicking “**sequence**”
4. Save Image Path: Set up the saving path of timber-snapshot images
Choose the saving path by clicking “Save to same path” or “Save to specified path”
(Note: Files will be saved in **MultiViewer** installation folder through defaulted path, such as: **C:\Program Files\MultiViewer\Picture**)

[*] Defaulted settings as the following Figure :

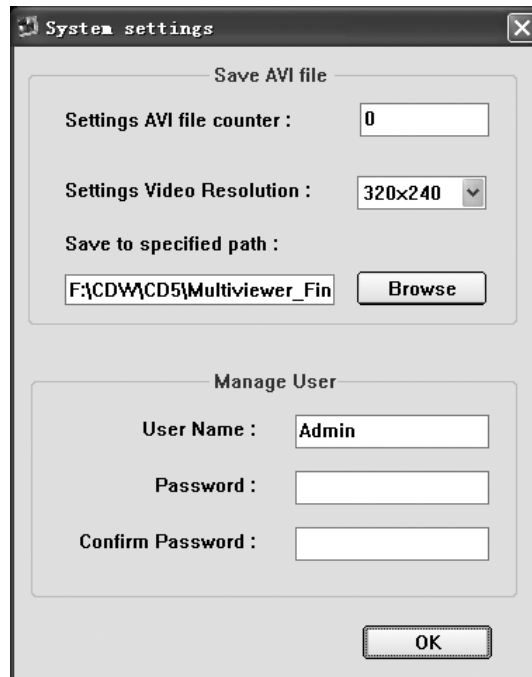


Video Capture

1. Click “**Recorder**” button to begin or stop recording (ref. I in Figure1)

2. Save AVI file : Set up file quantity, video resolution, specified path

[Note: Files will be saved in **MultiViewer** installation folder through defaulted path, such as: **C:\Program Files\MultiViewer\Video**]



The 'System settings' dialog box is divided into two main sections. The top section, titled 'Save AVI file', contains three settings: 'Settings AVI file counter' with a text box containing '0', 'Settings Video Resolution' with a dropdown menu showing '320x240', and 'Save to specified path' with a text box containing 'F:\CDW\CD5\Multiviewer_Fin' and a 'Browse' button. The bottom section, titled 'Manage User', contains three text boxes for 'User Name' (containing 'Admin'), 'Password', and 'Confirm Password'. An 'OK' button is located at the bottom right of the dialog.

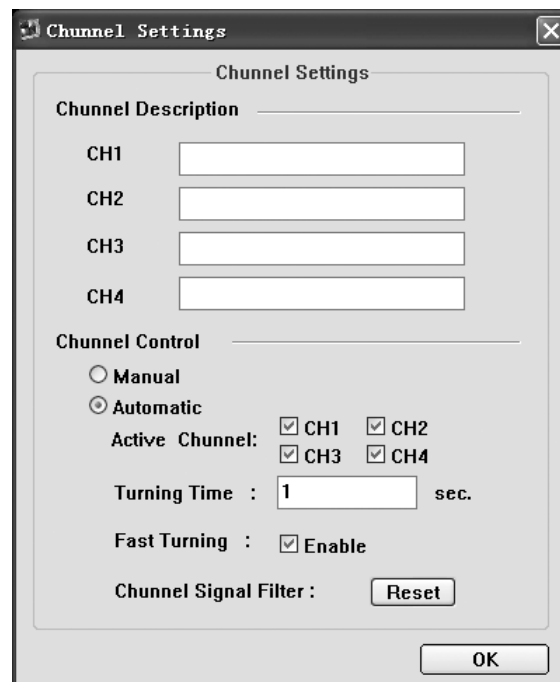
Manage User

Set up the User Name, Password

Channel Settings

Click “**Channel**” button, below window will appear (ref. G in Figure1).

You can select the active or inactive video channel by simply selecting CH1 to CH4. You can add channel description on the viewer screen. The defaulted settings as the following Figure :



The 'Channel Settings' dialog box is divided into two main sections. The top section, titled 'Channel Settings', contains a 'Channel Description' section with four text boxes labeled CH1, CH2, CH3, and CH4. The bottom section, titled 'Channel Control', contains two radio buttons: 'Manual' and 'Automatic' (which is selected). Below the radio buttons is a section for 'Active Channel' with four checkboxes labeled CH1, CH2, CH3, and CH4, all of which are checked. Below this is a 'Turning Time' section with a text box containing '1' and the unit 'sec.'. Below that is a 'Fast Turning' section with a checkbox labeled 'Enable' which is checked. At the bottom is a 'Channel Signal Filter' section with a 'Reset' button. An 'OK' button is located at the bottom right of the dialog.

If you click "**Manual**", **MultiViewer** will immediately stop controlling video channel, and main panel as showed below :



If you click "**Reset**" button, **MultiViewer** will start searching the video channel, and main panel as showed below :

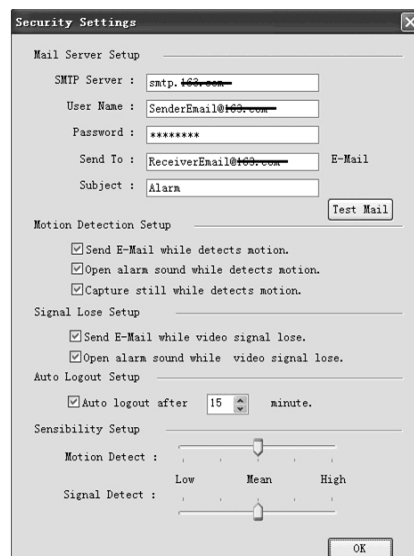


Note: You can click the "**SEARCH**" button to stop searching the video channel.

Security & Surveillance Settings

- Click "**Security**" button, below window will appear (ref. O in Figure1).

You can fill related information in the **Mail server Setup**, and can set up the motion detection, signal lost detection, auto logout by simply selecting the interval minutes. You can adjust the sensibility. The setting as the following Figure :



If you click "**Open alarm sound**", **MultiViewer** will alarm as of motion detection or signal lost, main panel showed as below:



Note:

[1] You can click "**ALARM**" button to stop playing sound.

[2] Files will be saved in **MultiViewer** installation folder through defaulted path, such as:

C:\Program Files\MultiViewer\Picture\Motion.

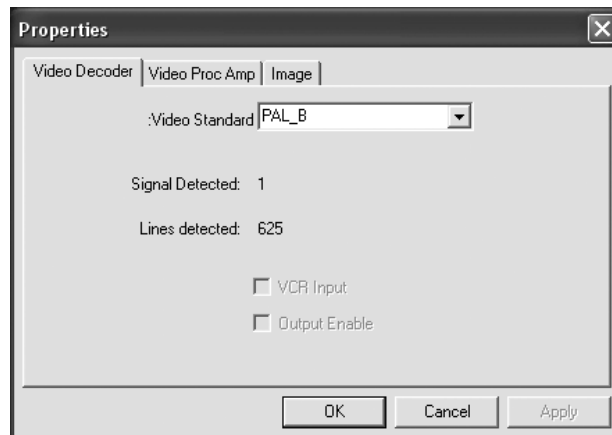
[3] Alarm sound generated by PC buzzer .

Advanced Settings

. Click "**Property**" button, below window will appear (ref. J in Figure1).

The advanced settings allows the user to adjust image characteristics by clicking the Camera Controls tab.

Image Properties: Adjustment of brightness, saturation, color, contrast, and TV system setting(PAL/NTSC)



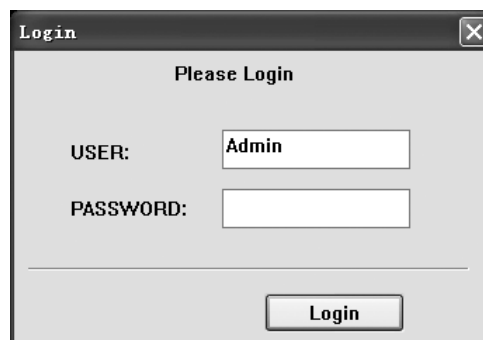
Login and Logout

Login

1.Click "**Login**" Button (ref. D in Figure1), as follows:



2.Input the user name and password, as the following Figure :



3.the defaulted user name is "**Admin**", users can access to the main interface without **password**.

Users can create new user names and passwords once entered the system. Setup method can be read in the latter part

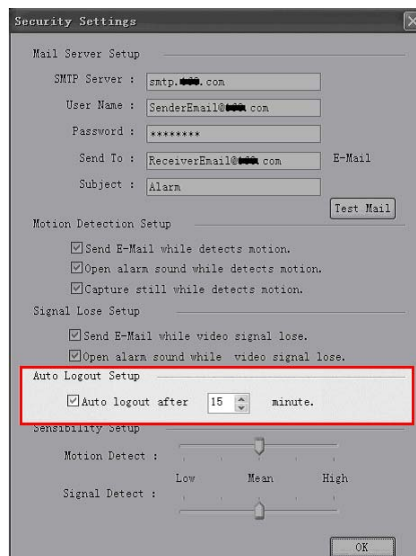
Logout

Click "**Logout**" button (ref. D in Figure1), as follows:



Auto Logout

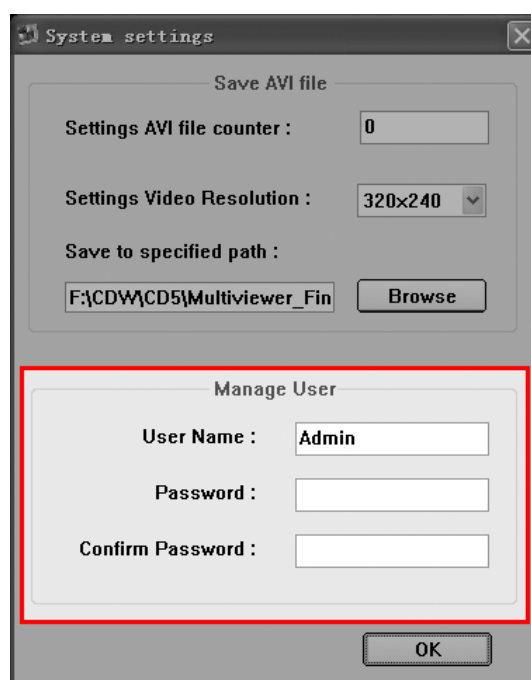
1. Click "Security" button (ref. O in Figure1), as the following Figure :



2. In "Auto Logout Setup" field , click the option and input/select interval minutes for auto logout,

Manage User

1. Click "System" button (ref. H in Figure1), as the following Figure :



2. In "Manage User" field, User Name or Password changeable

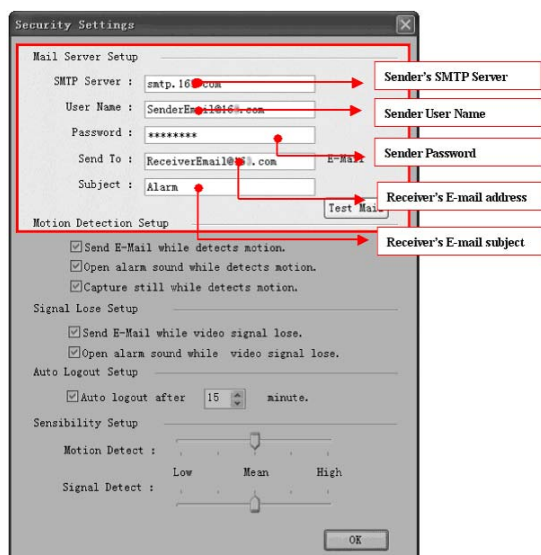
Note: The Password is described by 6 numbers or empty.

Email Sender Configuration

Click "Security" button (ref. O in Figure1)

In this area, users can set up receiver and sender's E-mail SMTP server and address.

Note: the address of the receiver and sender can be the same



In order to receive reports, you need to configure your email settings properly.

You can apply for a web e-mail service (such as Outlook, [Google GMail](#)) with **SMTP/POP3 server** (Remarks: If you are using the free web email service like [Yahoo](#) and [Hotmail](#), you are probably not provided with **SMTP/POP3 server**; but If you paid for a web email or you established an account with Outlook, you most likely have **SMTP/POP3 server** . [Google GMail](#) is a free web-based email that provides you with **SMTP/POP3**)

In “**Send to**” field, please input the email address, through which you want to receive the reports;

In “**SMTP Server**”, “**User Name**”, “**Password**” fields, please input the correct information (“**Send to**” and “**User Name**” can be the same).

You can find out what the **SMTP Sever/Host** would be, by asking your email service provider.

If your email can not support **SMTP/POP3 server**, the email sender will be invalid.

Test Mail

Once you have configured your email settings, you may want to test them to check if everything is functioning properly.

Please directly click 'Test Mail' button, then you can read an indication to see if the email address is correct or not.

Alarm Configuration

- 1.Click "**Security**" button (ref. O in Figure1), as the following Figure :
- 2.You can select alarm functions or adjust sensitivity.

Security Settings

Mail Server Setup

SMTP Server : smtp.***.com

User Name : SenderEmail@***.com

Password : *****

Send To : ReceiverEmail@***.com E-Mail

Subject : Alarm

Test Mail

Motion Detection Setup

☒ Send E-Mail while detects motion.

☒ Open alarm sound while detects motion.

☒ Capture still while detects motion.

Signal Lose Setup

☒ Send E-Mail while video signal lose.

☒ Open alarm sound while video signal lose.

Auto Logout Setup

☒ Auto logout after 15 minute.

Sensibility Setup

Motion Detect : Low Mean High

Signal Detect : Low Mean High

OK

Note:

1. For every alarm event, only one picture will be sent out.