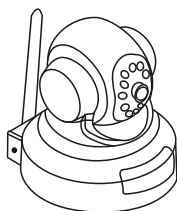
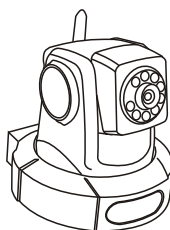


Quick Start Guide

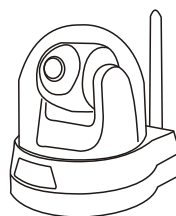
Network/IP Camera
(WiFi/cable optional)



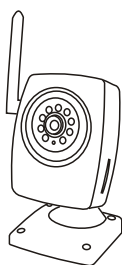
GD2805



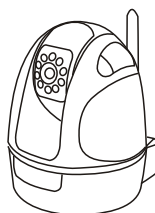
GD2806



GD2807



GD2808



GD2809

Version No.: 2.1

Please read this Quick Start Guide carefully before using this product!

PACKING LIST

IP camera



GD2805



GD2806



GD2807



GD2808



GD2809



Wi-Fi Antenna
(optional, but compulsory for GD2807)



Network Cable



CD



AUDIO I/O Cable



Power adapter



Bracket
(optional)

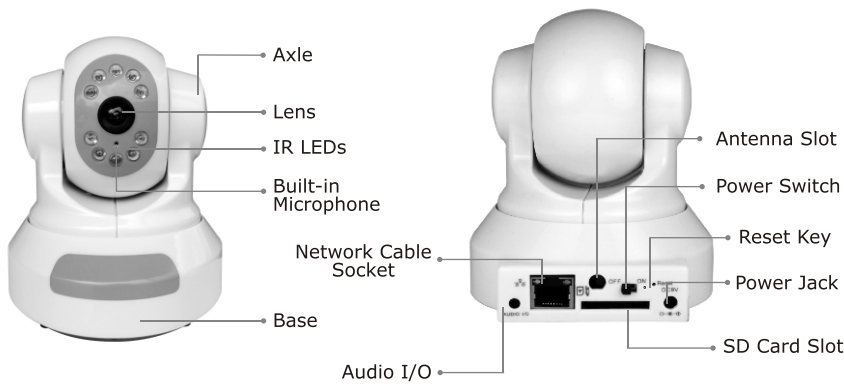


Metal Screws
(optional)

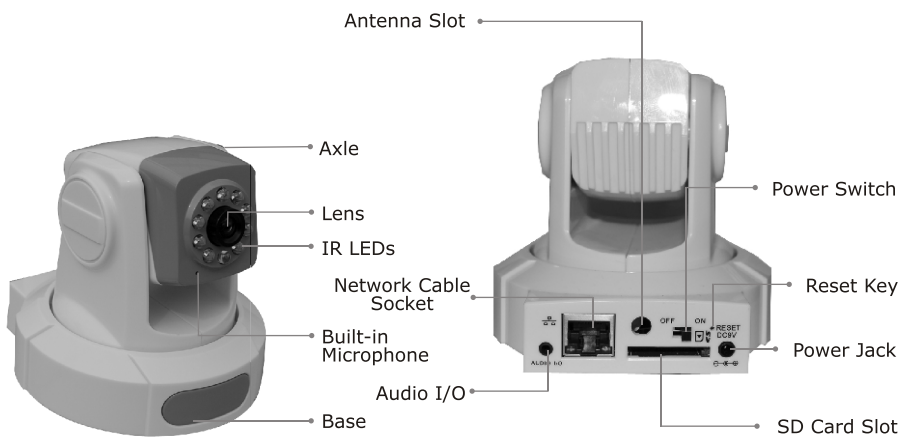
NOTE: the pictures is for reference only, please refer to real objects.

STRUCTURE

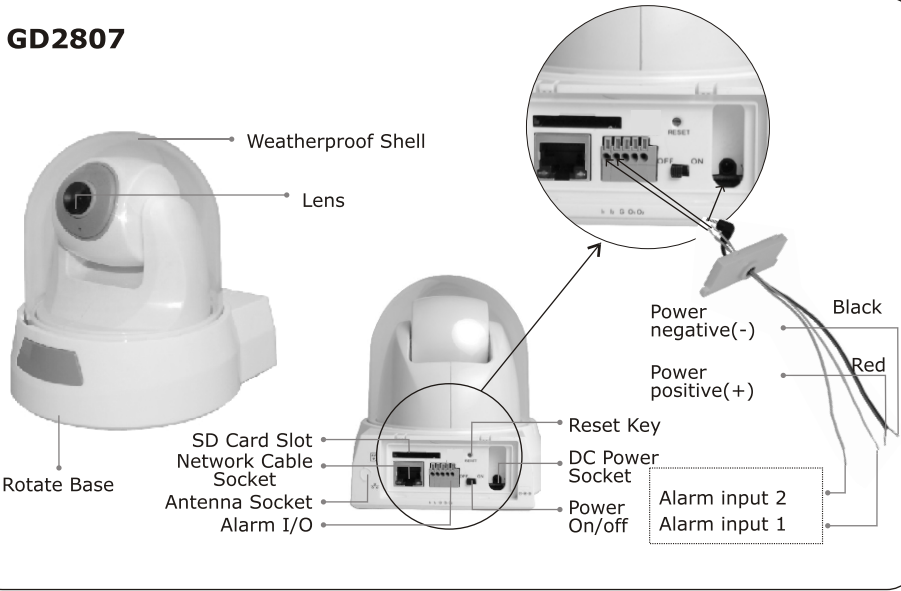
GD2805



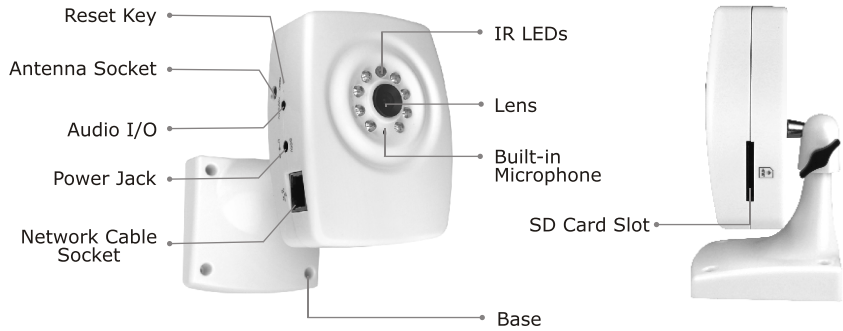
GD2806



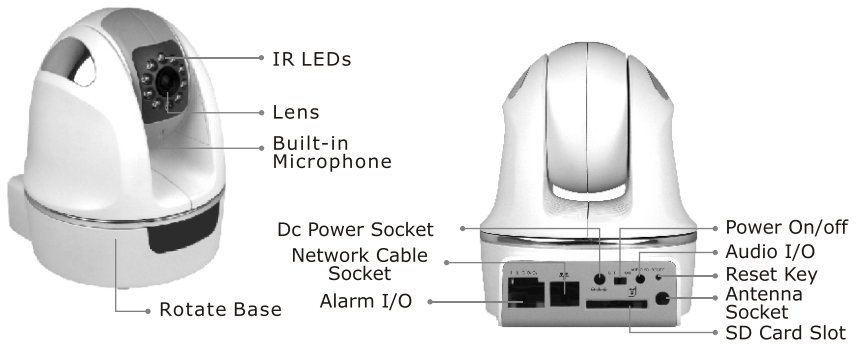
GD2807



GD2808



GD2809



Description of rear panel connection:



Ethernet interface



SD memory card slot

OFF/ON: Power switch (ON: turns on; OFF: turns off)

AUDIO I/O :

Audio input/output. AUDIO IN is in yellow and AUDIO OUT is in red



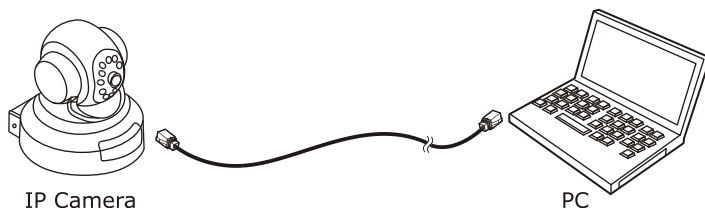
Parameter reset button. Press this button to reset to factory default settings. Use this button only when necessary

SETTING PARAMETER OF IP CAMERA

If it is the first time to use the IP Camera to set the parameter by PC, there are three mode as following:

Connection mode ①:

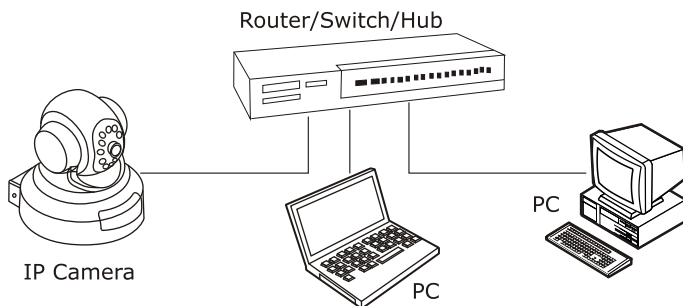
Connect the IP Camera to PC with the network cable.



- (1) Connect the IP Camera to PC with network cable;
- (2) Network indicator will be green in 5 seconds, which indicates connection finished.

Connection mode ②:

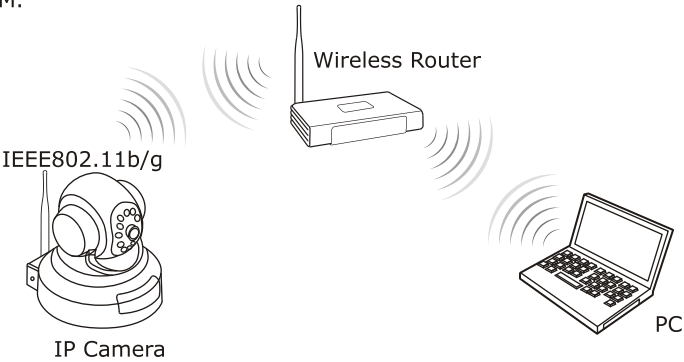
Connect the IP Camera through the LAN interface of the Switch/DSL Router or a Hub.



- (1).** Connect the RJ45 network port of the IP Camera to the LAN interface of the Switch/DSL Router or a Hub with the network cable .
- (2).** Connect the power adapter attached with the product to the power socket of the IP Camera and then connect the mains supply.

Connection mode ③:

This product can be matching WiFi module, support for wireless connectivity, with wireless AP devices(Such as wireless routers), wireless LAN components.When product leaving the plant the WiFi function default is the closure . The user need opens and completes WiFi in the wired connection's environment the related establishment(As Connection mode① and connection mode ②). Please refer to the user manual in the CD-ROM.

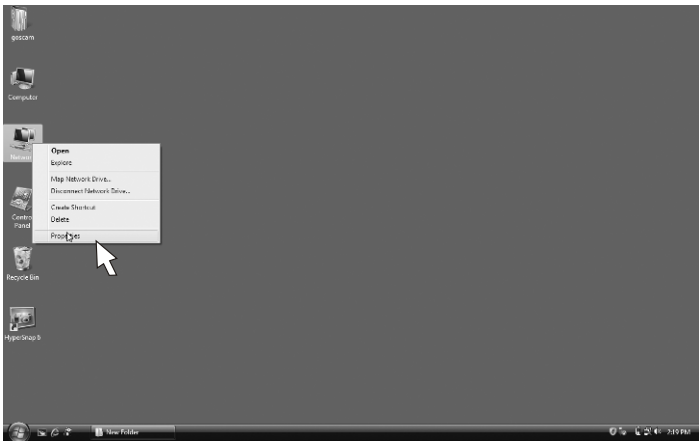


SEARCH NETWORK ADDRESS AND MODIFY PARAMETER

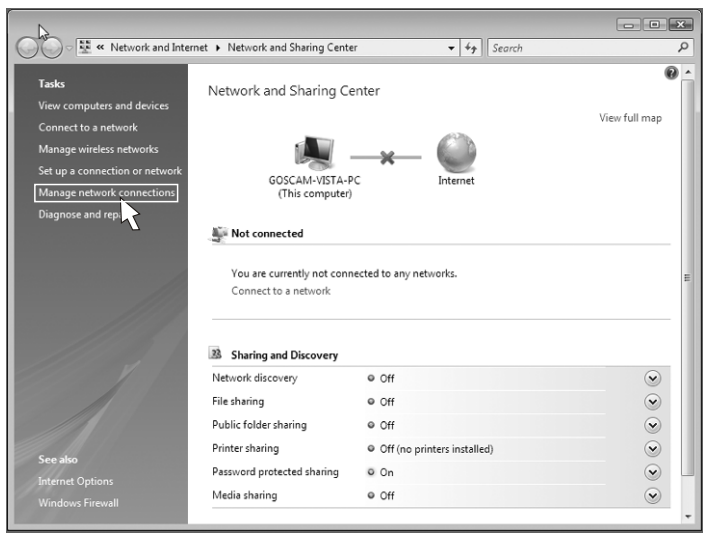
User computer's network settings

(1) operating system of your PC is microsoft windows vista:

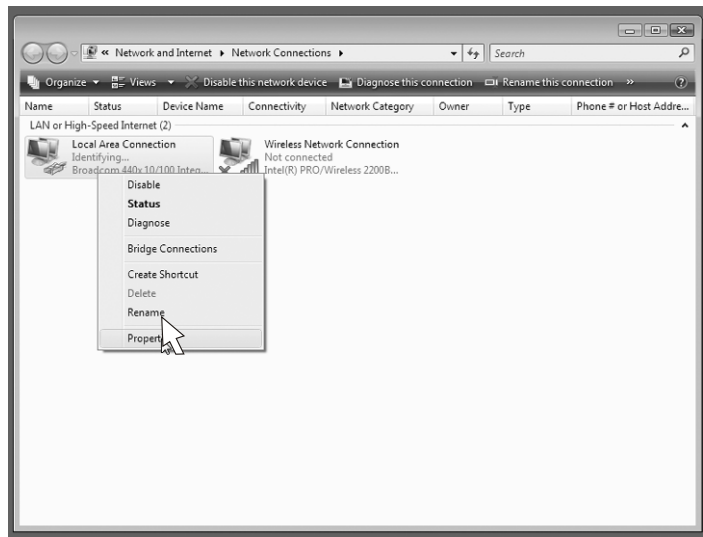
- 1. Right click <Network > icon on the desktop as following:



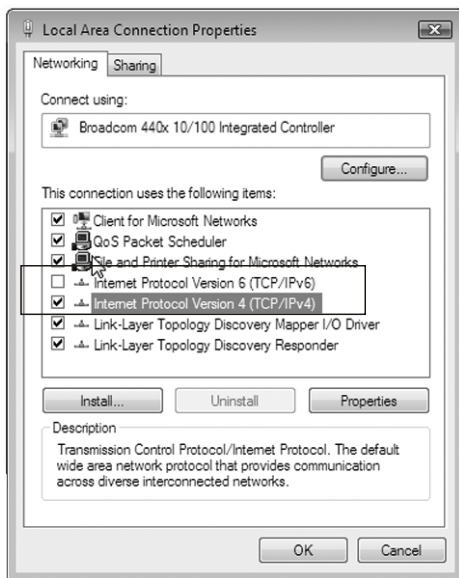
2. Click <Properties>, enter <Network and Sharing Center>interface as following:



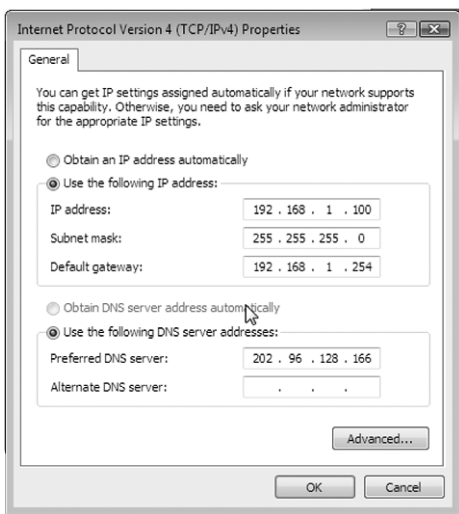
3. Double Click <Manage network connections>, enter <Network Connections> interface as following:



4. Right Click <Local Area Connection>, then click <Properties>,enter <Local Area Connection Properties>interface as following:



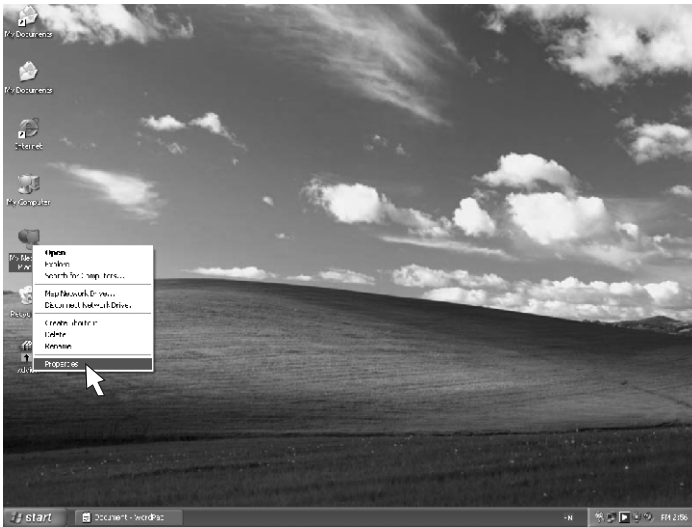
5. Note: IP camera nosupport IPV6 Protocol Version6, please cancel the <Internet Protocol Version6 (TCP/IPv6)>, then Select and double click<Internet Protocol Version4(TCP/IPv4)>.



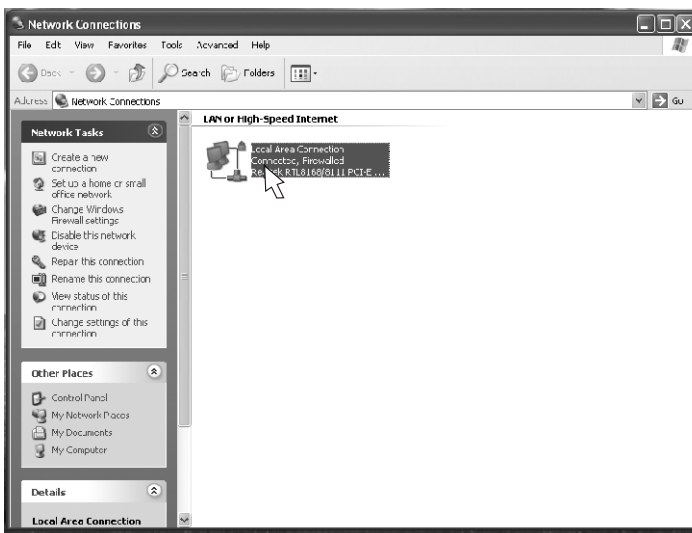
6. Manual set the IP address of your PC in the LAN, eg: 192.168.1.100, Other settings can refer to the figure above.

(2) Operating System of Your PC is Microsoft Windows XP or Windows 2000:

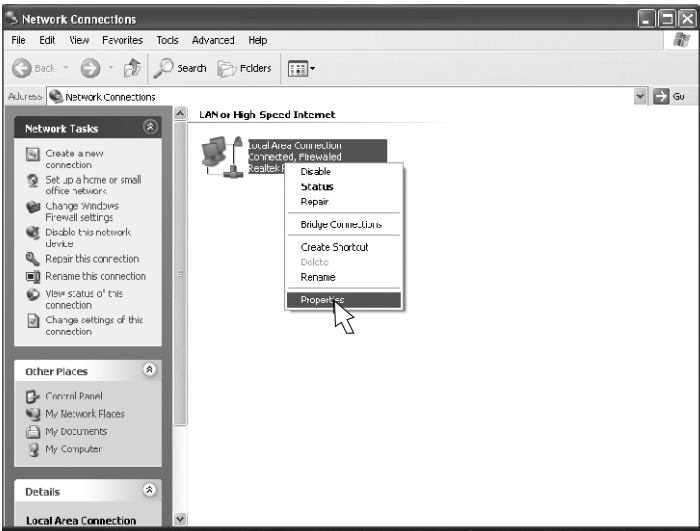
1. Right click <**Network**> icon as following:



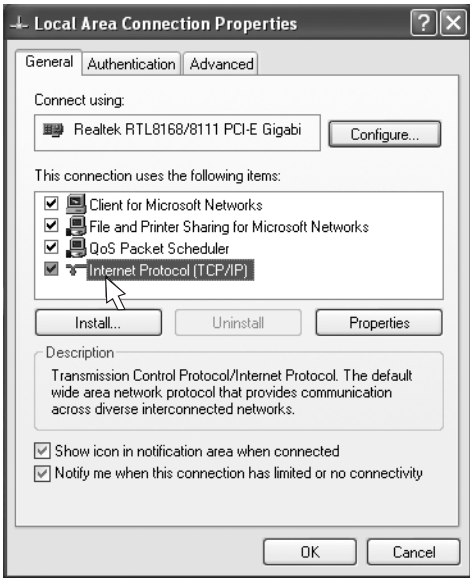
2. click <**Properties**> as following:



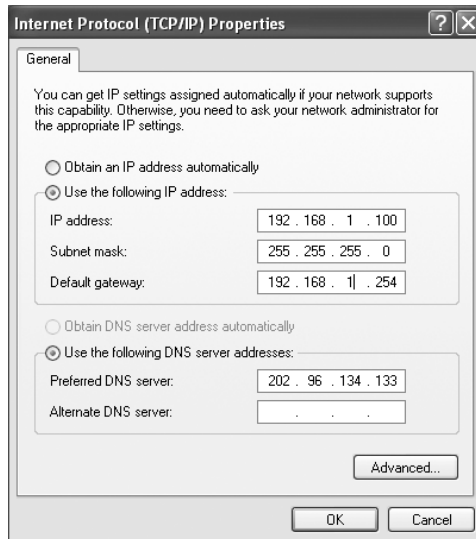
3. Right click <Local Area Connection > as following:



4. Click <Properties > as following:



5. Double click <**Internet Protocol(TCP/IP)**> as following:



6. Set the LAN address of your PC , such as: 192.168.1.100, other parameter as above.

Default Parameters

IP address:192.168.1.1 Subnet mask:255.255.255.0 Gateway:192.168.1.254
COM port:5000 Web port: 80
User name: admin Password: admin

IP Search and Modification of IP Camera

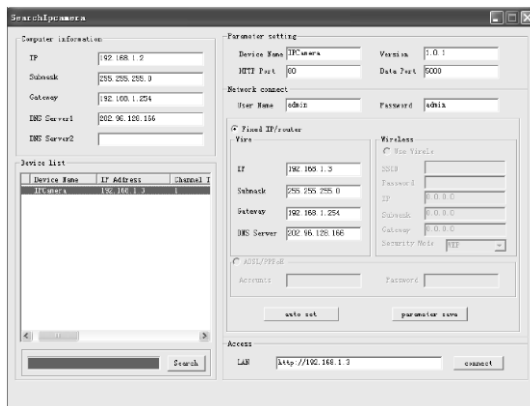
The IP address of the IP camera should be in the same LAN section as the IP of the PC so that the PC can log on to access the IP Camera in the LAN.

- (1)** please first insert the delivery-attached CD into your CD-ROM. Open the “SearchIpcamera” folder in the CD, Select suitable language folder:
 “SearchIpcamera V 1.0.1(EN)” folder: English version
 “SearchIpcamera V 1.0.1(CH)” folder: Chinese version

Select a folder as English version :



Double click to run the SearchIpcamera.exe file, as shown in the following figure:



(2) Click the **Search** button, and the system will automatically search all IP cameras in the LAN. The **Computer information** column shows the current IP address and its network parameters of the PC. The **Device List** column shows IP addresses and other parameters of all searched IP cameras.

(3) In the **Device List** column, double click any IP camera. The **Parameter Setting** column on the right of the window will show basic information and network parameters of the device: The default HTTP port is 80, and the Data port is 5000; The default login user name is admin, and the password is admin; The default network connection mode is **Fixed/Router**.

(4) Select **Fixed/Router**. Click **auto set**. The system will automatically set a new IP and other network parameters for the IP camera according to the current LAN environment. Of course, the user can also manually set related network parameters of the IP camera. Please note that the IP address must be in the same network section as the IP address of the PC, and make sure there is no IP conflict with other devices in the LAN. After completion of network parameters, click **parameter save** to save.

(5) Double click to select an IP in the **Device List**. The IP address will be displayed in the **Access** column. Click **connect**. The system will automatically open **Windows IE** to enter the login interface of the IP camera.

CONTROL INSTALLATION

If it is the first time for your PC to access the IP camera, the OCX file needs to be installed before login; otherwise, you cannot browse videos of the IP camera normally. At the bottom of the login interface, click **Download** to download the OCX setup file to the designated path. The login interface is as shown in the following figure:

Real-time IP-CAM Monitoring System

Contact Us

System Login

Username: admin

Password: *****

Submit

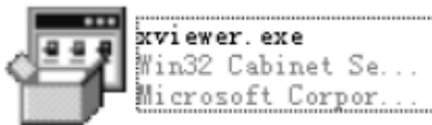
Cancel

Notice

If you first time login this system or can't glance over the image normally, Please click links below to download the setup file and decompress the installment, then login in again.

OCX Setup File Download

You may also find the OCX setup file in the delivery-attached CD, and open the **ActiveX Control** folder.



Close all IE pages. Double click the xviewer.exe file. A file installation dialog box appears.



Click **Install** to complete the OCX plug-in installation and click **Exit** to exit.

LOGIN TO IP CAMERA

In the **Windows IE** address bar, enter the IP address of the IP camera to enter the login interface. Enter the correct user name (admin by default) and password (admin by default) to enter the video browse interface of the IP camera.



INSTALLATION

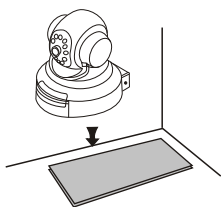


Before installing and using the product, please read the following precautions carefully and make sure they are fully understood.

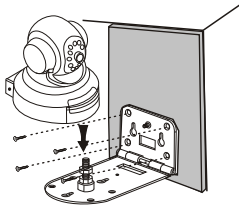
- * Use only the power adapter attached with the product. Use of unauthorized power a dapter may cause damage to your IP Camera;
- * Do not touch the lens of the IP Camera for it may leave fingerprint or stain on the lens and will cause vague;
- * Do not turn the lens of the IP Camera at will. The optimum focus range has been set before the IP Camera is delivered out of the factory. If you turn the lens, it may cause incorrect focus and vague images.
- * Do not turn the Pan/Tilt by force for it may cause damage to internal components of the Pan/Tilt.
- * IP Camera terminal shall be installed in an indoor environment.
- * For firmware upgrading or connection with an external alarm, refer to detailed instructions contained in the CD.

1. This product can be placed, hanging, the user can place in accordance with the requirements of the installation choose the right way to install.
2. Horizontal installation: Select a position on a horizontal surface and place the IP Camera directly on the horizontal surface.
3. Suspended installation: Install the bracket to proper position on the wall, or settled upside down under the ceiling; Root the special screw to the 1/4" screw hole on the bottom of camera.

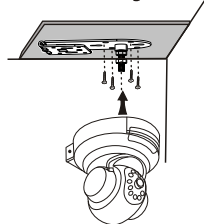
Floor board



On wall



Under ceiling



FCC INFORMATION

This device complies with part 15 of the FCC Rules. Operation is subject to the following two conditions:

- (1) this device may not cause harmful interference.
 - (2) this device must accept any interference received, including interference that may cause undesired operation.
- Changes or modifications not expressly approved by the party responsible for compliance could void the user's authority to operate the equipment.

CAUTIONS

- The apparatus shall not be exposed to dripping or splashing and that no objects filled with liquids, such as vases, shall be placed on the apparatus.
- Turn off the camera/receiver if the system is not in use.
- The adapter is used as the disconnect device from the mains. The adapter shall remain readily operable.
- The camera/receiver can only be completely disconnected from the mains by unplug the adapter.
- Do not cut the DC power cable of the apparatus to fit with another power source.
- Attention should be drawn to the environment aspects of battery disposal.

EU Environmental Protection

Waste electrical products should not be disposed of with household waste. Please recycle where facilities exist. Check with your local authority or retailer for recycling advice.

